

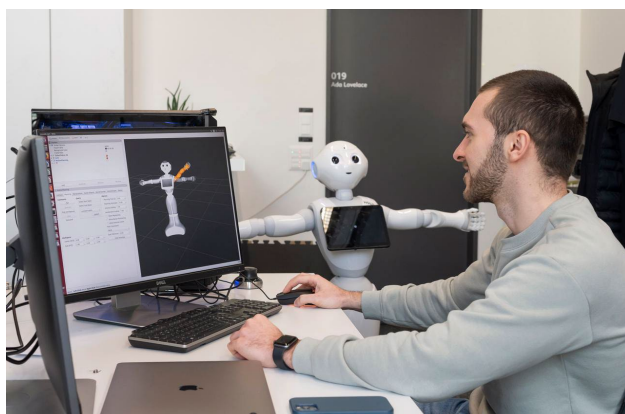
## Fact Sheet for Partner Universities 2024/2025

<b>Name of the University</b>	Hochschule Luzern (HSLU) <b>Lucerne University of Applied Sciences and Arts</b>
<b>School / Faculty</b>	Hochschule Luzern – Informatik (HSLU-I) <b>School of Computer Science and Information Technology</b>
Postal Address	International Office Campus Zug-Rotkreuz Suurstoffi 1 CH-6343 Rotkreuz
Website	<a href="#">International Office - General Website</a>
General IO Email Address	<a href="mailto:international.it@hslu.ch">international.it@hslu.ch</a>
Erasmus Code	CH LUZERN14
Information for Incoming Exchange Students	<a href="#">Information for Incoming Students</a>
<b>International Office</b>	
Head of International Office	Nina Blättler, <a href="mailto:partnerships.it@hslu.ch">partnerships.it@hslu.ch</a>
Team members of International Office	Selma Crosby, <a href="mailto:partnerships.it@hslu.ch">partnerships.it@hslu.ch</a> Salome Lütolf, <a href="mailto:international.it@hslu.ch">international.it@hslu.ch</a> Annik Scholzen, <a href="mailto:international.it@hslu.ch">international.it@hslu.ch</a>



Important Dates	
<b>Fall Semester 2024</b> (Up to date semester dates can be found on our <a href="#">website</a> )	
<b>Nomination &amp; Application Deadlines</b>	<p>Nomination (by <a href="#">email</a>): <b>15 April 2024</b></p> <p>Application (online): 30 April 2024 for the following fall semester and/or full academic year</p> <p>After nomination of the student, they will receive access to our online application tool (Mobility Online) to complete their application.</p>
<b>Get started in Lucerne Workshops</b> (mandatory)	<p>Part One: 6 July 2024, online via Zoom</p> <p>Part Two: 14 September 2024, on-site in Lucerne</p> <p>Registration and more information <a href="#">here</a>.</p>
<b>Introductory weeks</b>	<p><a href="#">Introductory weeks</a> for new incoming students take place two weeks before the semester starts (2 September - 13 September 2024). Students can choose between intensive language courses or courses in their study field. For non-German speaking incoming students we highly recommend attending the German as a foreign language course.</p>
<b>Semester dates</b>	<p><b>16 September 2024 – 1 February 2025</b></p> <p>Exam period: 13 January 2025 - 1 February 2025</p> <p>Students are expected to be in Switzerland for the exam period.</p>
<b>Public holidays</b>	<ul style="list-style-type: none"> <li>• 1 November 2024 (All Saints' Day)</li> <li>• 8 Dezember 2024 (Immaculate Conception)</li> </ul>
<b>Spring Semester 2025</b> (Up to date semester dates can be found on our <a href="#">website</a> )	
<b>Nomination &amp; Application Deadlines</b>	<p>Nomination (by <a href="#">email</a>): <b>15 October 2024</b></p> <p>Application (online): 31 October 2024 for the following spring semester</p> <p>After nomination of the student, they will receive access to our online application tool (Mobility Online) to complete their application.</p>
<b>Get started in Lucerne Workshops</b> (mandatory)	<p>Part One: December 2024, online via Zoom (date to be announced)</p> <p>Part Two: February 2025, on-site in Lucerne (date to be announced)</p> <p>Registration and more information <a href="#">here</a>.</p>
<b>Introductory weeks</b>	<p><a href="#">Introductory weeks</a> for new incoming students take place two weeks before the semester starts (3 February – 14 February 2025). Students can choose between intensive language courses or courses in their study field. For non-German speaking incoming students we highly recommend attending the German as a foreign language course.</p>
<b>Semester dates</b>	<p><b>17 February 2025 – 5 July 2025</b></p> <p>Exam period: 16 June 2025 – 5 July 2025</p> <p>Students are expected to be in Switzerland for the exam period.</p>
<b>Public holidays</b>	<ul style="list-style-type: none"> <li>• 18 April 2025 (Good Friday)</li> <li>• 21 April 2025 (Easter Monday)</li> <li>• 29 May 2025 (Ascension Day)</li> <li>• 09 June 2025 (Whit Monday)</li> <li>• 19 June 2025 (Corpus Christi)</li> </ul>

Academic Information	
<b>Courses for Incoming Exchange Students</b>	The course offer can be found on our <a href="#">website</a> for incoming students.
<b>Grading System</b>	From 1 – 6 (6 is the best, 1 is the lowest grade, passing grade is 4)
<b>ECTS System</b>	The Lucerne University of Applied Sciences and Arts fully subscribes to the ECTS System and allocates ECTS credits to all undergraduate and postgraduate programs. In line with ECTS requirements, 60 credits measure the workload of a full-time student during one academic year. One ECTS points equals to 30 hours of work (lessons, self-study, homework, etc.).
<b>Full-time Study Load</b>	Maximum of 30 ECTS per semester (minimum 18 ECTS).
<b>Language Requirements</b>	Proof of English Proficiency at least B2 level (if you're not a native speaker and applying for courses taught in English) or Proof of German Proficiency at least B2 level (if you're not a native speaker and applying for courses taught in German)
<b>Admission Requirements</b>	Students must have completed at least two semesters of study at the home university before their exchange semester with us, proof of language proficiency, recommended GPA 2.75 or above.
<b>Language Courses</b>	HSLU's <a href="#">language centre</a> offers a wide range of language courses.
<b>Course Registration</b>	The exchange program coordinator of the Lucerne University of Applied Sciences and Arts will do the course registration for you according to your predefined learning agreement, except for language courses. For those you must enroll yourself (information follows application).
<b>Transcripts of Records</b>	Transcripts are generally available few weeks after the final exams. The exchange program coordinator will send the official transcript to the student's home institution and a copy to the student by email.



## Further Information for International Students

<b>General Information for Incoming Students</b>	Information on courses available in English, student guide, application process can be found on: <a href="#">Information for Incoming Students</a>
<b>Accommodation</b>	Please find our on-campus accommodation offer <a href="#">here</a> . <b>Room bookings</b> must be made via our online application tool (Mobility Online). Booking period for fall semesters starts on <b>15 May</b> for students from partner universities. Freemover students can book as of 30 May. Booking period for spring semesters starts on <b>15 November</b> for students from partner universities. Freemover students can book as of 30 November.
<b>Campus Video</b>	<a href="#">HSLU Campus Zug-Rotkreuz Video</a> <a href="#">HSLU Study in the Heart of Switzerland</a>
<b>Buddy Program</b>	The buddy program is run by <a href="#">ESN Luzern</a> (Erasmus student network). Incoming students can sign up for a buddy during application process.
<b>Visa Information</b>	<a href="#">Visa Information Website</a> Please contact our International Office, we provide more information in case you need a visa to enter Switzerland.

