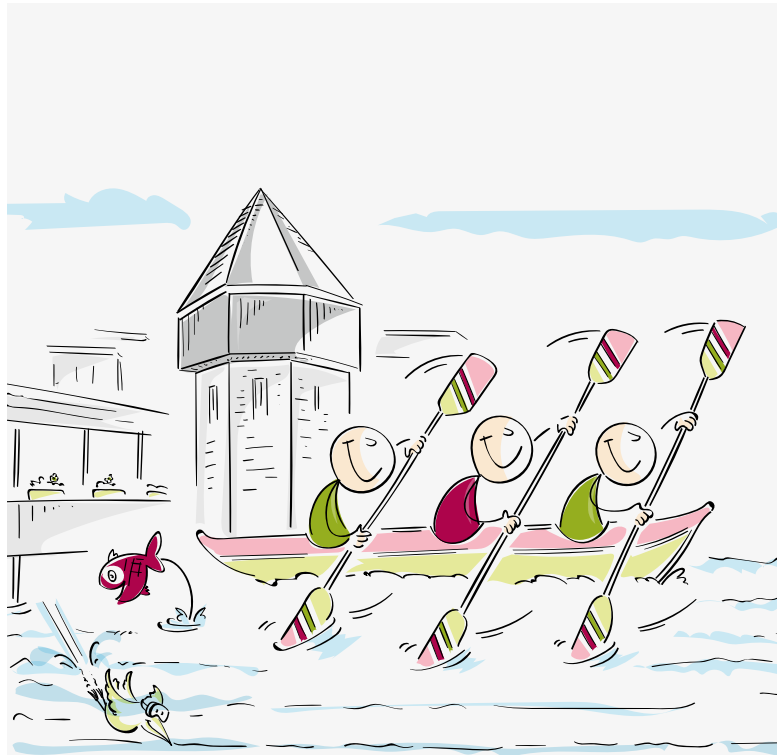


# Guiding Principles

for Teaching and Learning



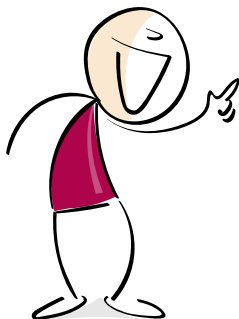


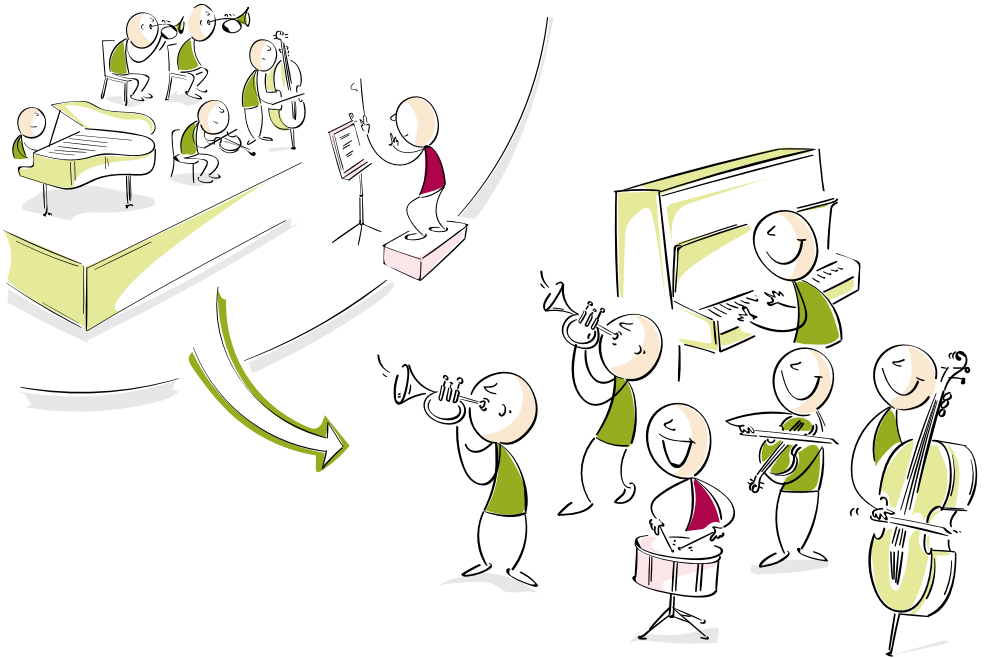


How do we want to teach and learn at the Lucerne School of Business in the future?

We gave 1000 answers to this question – students, lecturers, all of us. With the support of software, feedback loops and workshops, we have condensed the answers into six guiding principles. These will shape our teaching and learning from today on.

**Let's all adhere to these guiding principles.**

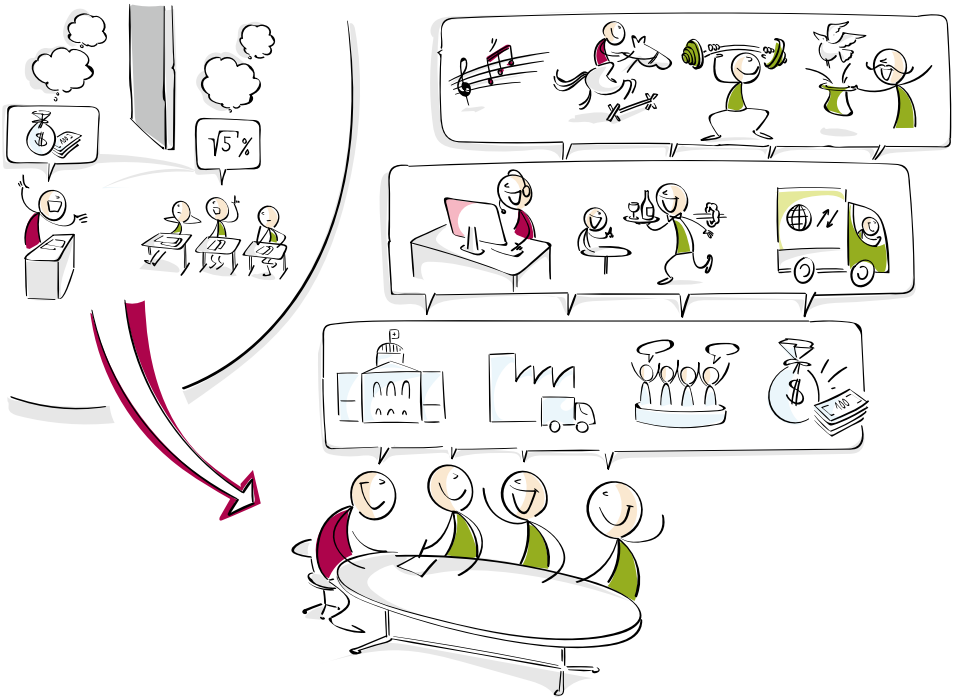




## 1. We learn self-responsibly with and from each other

### Students, participants in executive education and lecturers:

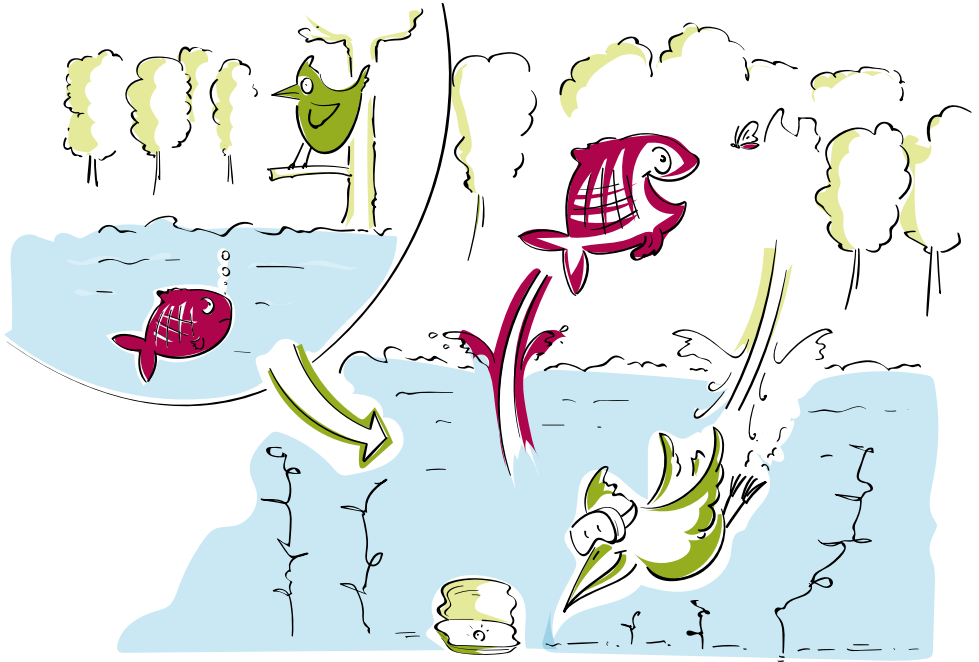
- form a knowledge-based partnership with their knowledge and experience
- engage in learning independently and on their own responsibility
- support each other in their complementary roles



## 2. We engage in relationships professionally and personally

### Students, participants in executive education and lecturers:

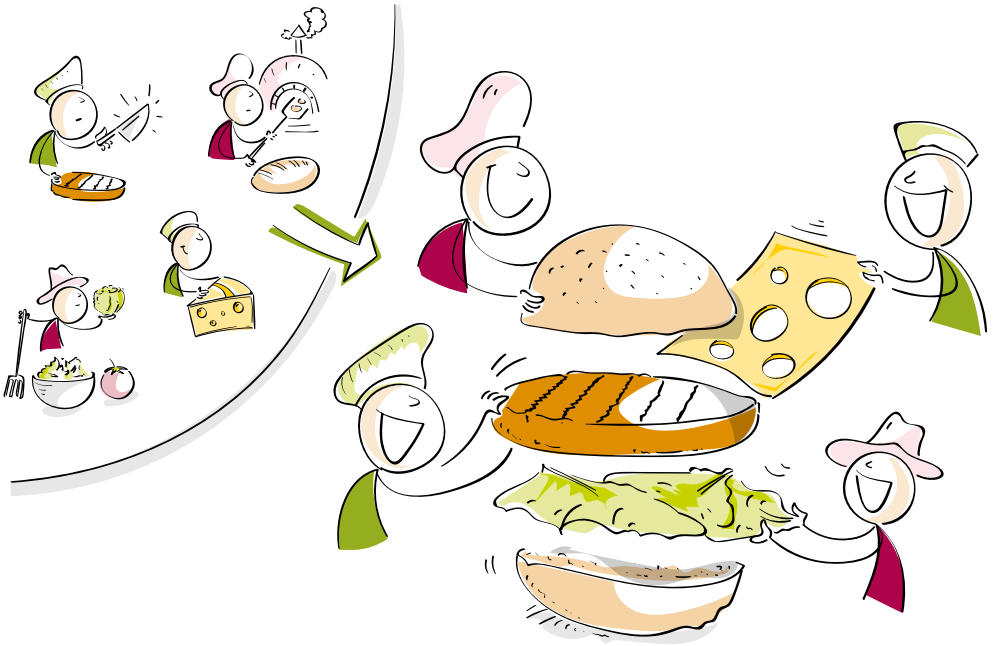
- seek to engage in a professional and personal dialogue
- perceive themselves as individuals and engage with other individuals
- let others benefit from their own strengths and work on their weaknesses



### 3. We have confidence in each other

#### Students, participants in executive education and lecturers:

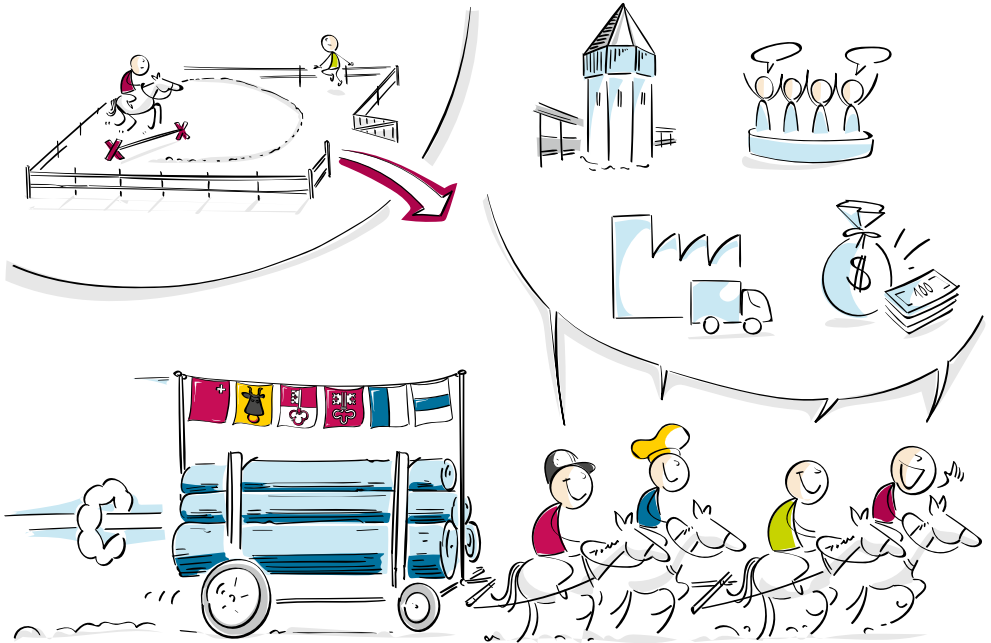
- process intricate and complex tasks close to the working world
- engage with each other using sound personal feedback
- let themselves be challenged again and again by learning new content, methods and tools



## 4. We see the big picture

**Students, participants in executive education and lecturers:**

- discover larger contexts together
- work in the current economic, social and political context
- think about interrelationships across disciplinary boundaries

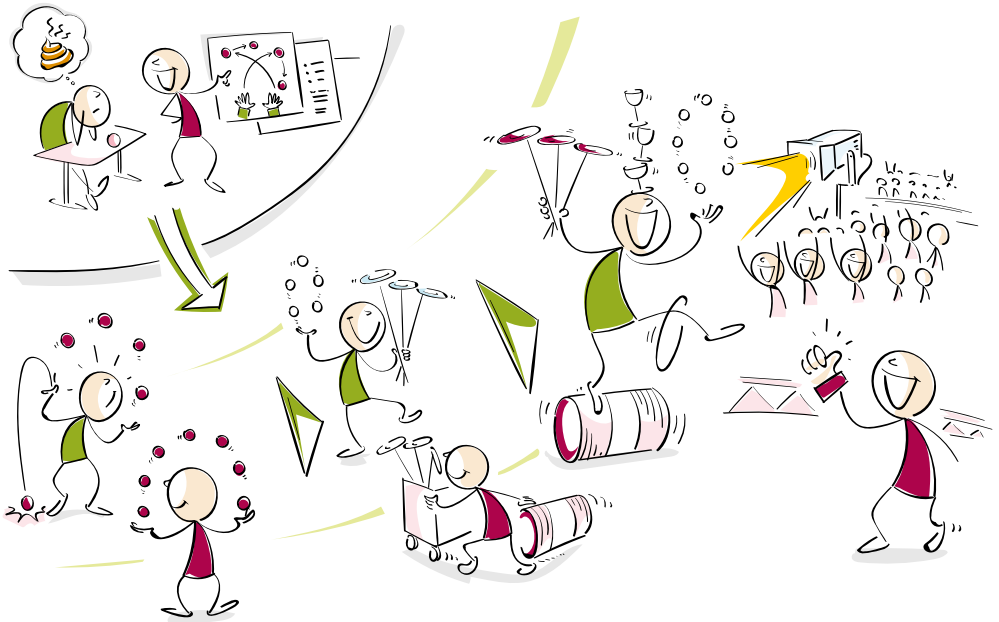


## 5. We seek cooperation in all directions

### Students, participants in executive education and lecturers:

- network across disciplinary and institutional boundaries
- consider collaboration and teamwork among themselves as a matter of course
- form partnerships between those working with theory and practice





## 6. We are committed to the learning process and success

### Students, participants in executive education and lecturers:

- want to develop professionally and personally
- are committed to their subjects/ themes and their development
- perform as well as possible





**Lucerne School of  
Business**

Zentralstrasse 9

Postfach

6002 Luzern

T +41 41 228 41 11

wirtschaft@hslu.ch

[hslu.ch/business](https://www.hslu.ch/business)

